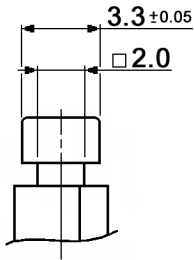
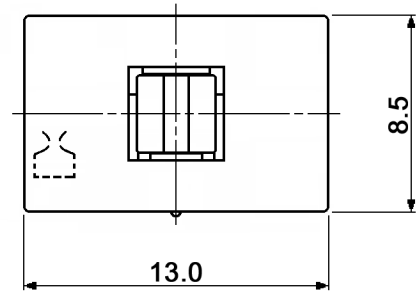
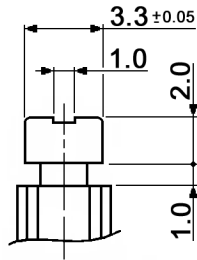


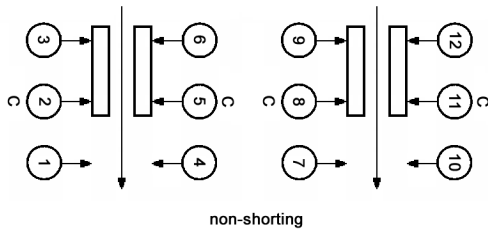
DETAIL A



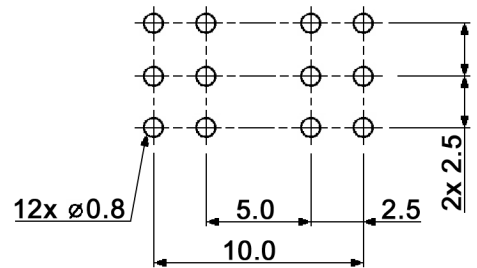
DETAIL B



CIRCUIT DIAGRAM  
C: COMMON PIN



HOLE LAYOUT  
TOP VIEW  $\oplus 0.05$



Compliance: RohS II (2011/65/EU)

Tolerances:	up to 10: ±0.2mm	Date	Name
	above 10-50: ±0.3mm	08/02	us
Rename	01/15	dr	
General tolerances	05/14	dr	
Revised	12/09	dr	
Modifications	Date	Name	

**MPSA 42E06x-O**

**knitter-switch**

**30 03 22**

Page

1/2

Specifications:

Contact rating: 0.1A, 30V DC  
 Contact resistance: 30mOhm  
 Insulation resistance: 100MOhm  
 Dielectric strength: 500V AC (50/60Hz, 2mA) for 1 minute  
 Operating temperature: -10°C to +60°C  
 Mechanical life: 10 000 cycles  
 Operating force: 350 +/-100gf  
 Soldering conditions: 260 +/-5°C, 5 +/-1sec.  
 Material: Terminal: brass strip, silver plated  
 Contact clip: PBS, silver plated  
 Spring: SWC, temper  
 Housing: POM, black  
 Case: nylon, black  
 Push: POM, white

x	Switching function
empty	on - (on), momentary
L	on - on, latching

Compliance: RohS II (2011/65/EU)

Tolerances: up to 10: ±0.2mm above 10-50: ±0.3mm		Date	Name	<b>MPSA 42E06x-O</b>
		08/02	us	
			<b>knitter-switch</b>	<b>30 03 22</b>
				Page 2/2
Modifications	Date	Name		